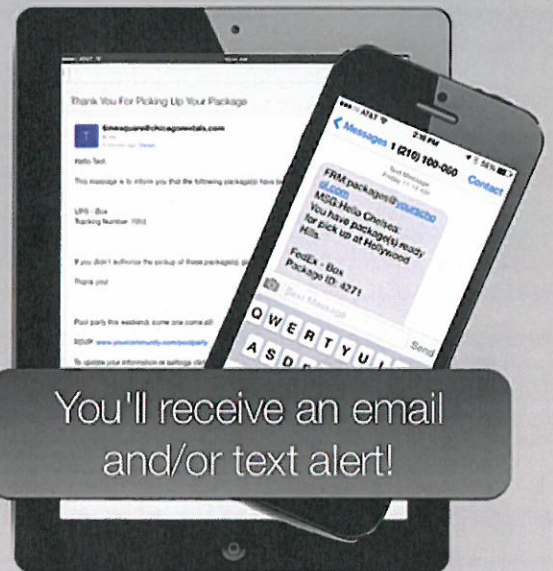


# Welcome Home!

## Your Community Offers:

### PackageLog

Stay connected to your packages and your community!



## Look for your "Welcome" e-mail to get started!

### Resident Portal Features:

- ▶ Turn ON text messages to get updates wherever you go (text message & data rates may apply).
- ▶ Add your authorized "agents," those allowed to pick up your packages (boyfriend, roommates, parents, etc).
- ▶ Update your email, phone number, PIN, and password.
- ▶ Access to view your package arrival and delivery history.

For questions, please contact your community management office.